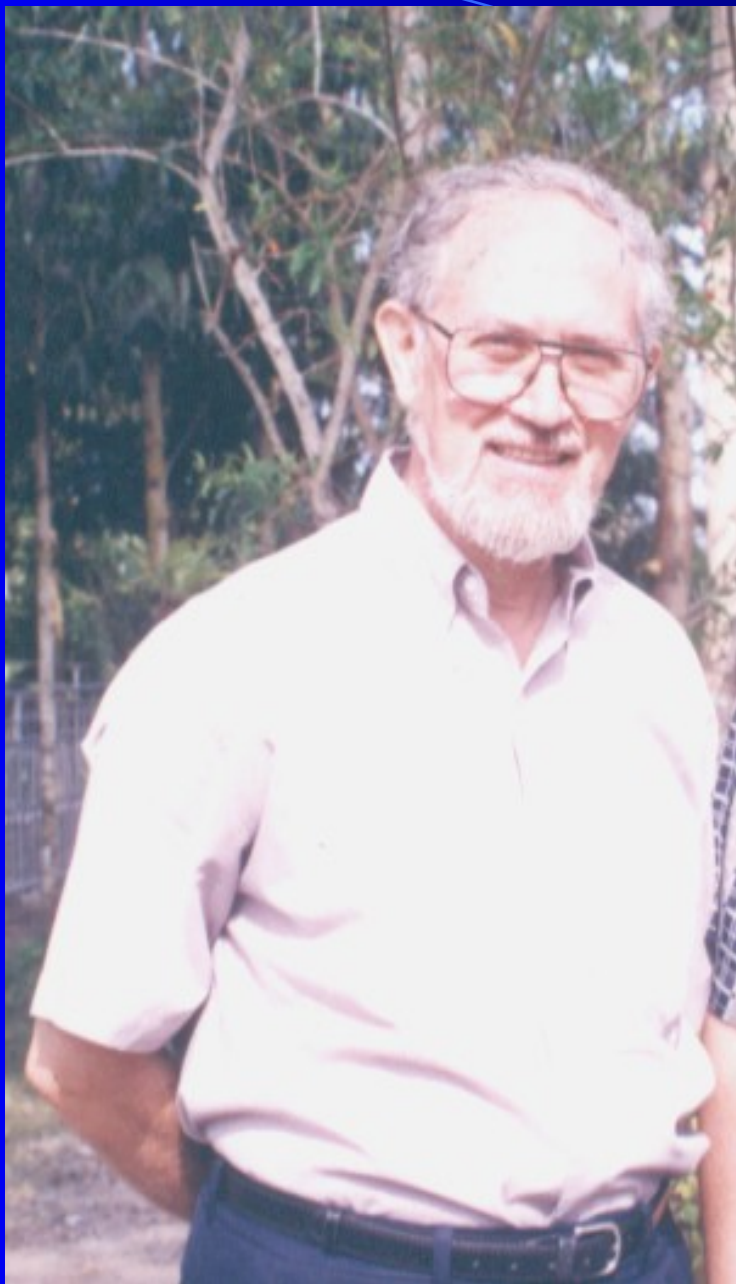


Silsilah Dialogue Movement

Silsilah

- Silsilah is a dialogue movement promoting deeper understanding and better relations between Muslims and Christians, and together, with people of other living faiths.



- Touched by an experience of conflict between Muslims and Christians in Mindanao and inspired by God's dialogue with people of all cultures and religions, **FR. SEBASTIANO D'AMBRA, PIME**, with a group of Muslim and Christian friends, started officially the Silsilah Dialogue Movement in Zamboanga City on May 9, 1984.

CHAIN

- Silsilah is an Arabic word which literally means **chain** or **link**.



- As used by the Sufis (Muslim Mystics), it describes a process of attaining an experience of the Divine. The same root word is used as “geneological tree” which implies a spiritual chain of humanity as created by the same God. Thus, “Silsilah” in the Movement is taken as an inspiring and key concept to describe Muslims, Christians and other people of living faiths who are moving together as one universal family towards a common vision and mission of dialogue and peace.

SILSILAH VISION

In the name of God, the fountain and source of dialogue, Silsilah envisions a life-in-dialogue for all Muslims, Christians and peoples of other living faiths in respect, trust and love for one another and moving together towards a common experience of harmony, solidarity and peace



Welcome!!

5 2 1'02



18th
Silalahi Summer Course



Dakak
PANGLOSS

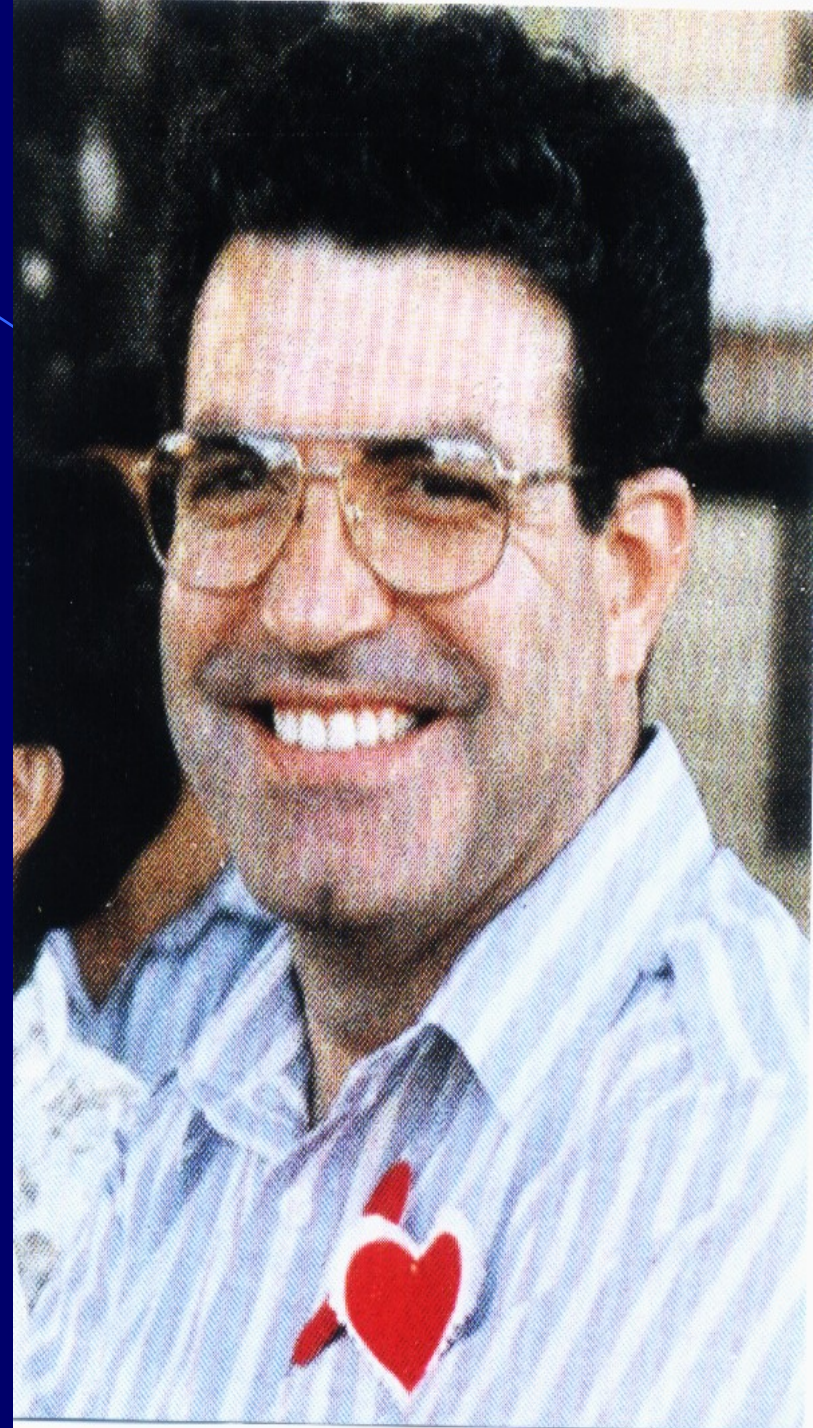
Emmaus Dialogue Community

- This is a community of Christian lay women of the Movement established in Zamboanga City in 1987 and recognized by the Church as a lay association. They try to live out their charism based on the Beatitudes of the Gospel and the spirituality of life-in-dialogue.



Comunit'a Dialogo

- This is a group of Christians in Italy who are inspired by the Silsilah spirit and the life and death of **FR. SALVATORE CARZEDDA, PIME.** They are committed to promote dialogue and peace in Italy and spread the Harmony Chain Initiative.





FAM. CASTELA 1988

ANGEL MARIA CASTELA
NACIO EN LAZARUS
MAY 10 1918
MAY 10 1988
ANGEL MARIA CASTELA
NACIO EN LAZARUS
MAY 10 1918
MAY 10 1988
ANGEL MARIA CASTELA
NACIO EN LAZARUS
MAY 10 1918
MAY 10 1988

4 15 89

VOLUNTEERS

- Individuals, groups or institutions who offer regular and voluntary service to Silsilah in promoting dialogue and peace through the programs and initiatives of the Movement.



FRIENDS



- The friends of Silsilah are individuals, families, communities and groups who are inspired by the Silsilah spirit and help the Movement with their friendship, concern and prayer.



LINKAGES

- Silsilah links with local, national and international institutions, groups, and movements having similar objectives as Silsilah. The Movement however, does not identify itself with any political, social or religious organization. Silsilah as a Dialogue Movement is religious in nature and recognizes religious leaders. The Catholic Bishops and the Grand Muftis of the Muslims are official advisers of Silsilah.



SILSILAH DIALOGUE INSTITUTE

- The SDI promotes the Culture of Dialogue, Path to Peace by offering courses accredited by various government and non-government institutions and universities. It also offers education and formation programs through training, seminars, symposia, fora, exposure programs and research.



SILSILAH MEDIA DESK

- Information on ongoing programs and activities of the Silsilah Dialogue Movement is sent out using available forms of communication (e.g. print and electronic media, the Internet) to maintain links with local, national and international groups, and to continue to promote the aims and objectives of the Movement.



Fr. D'Ambra and Dir. Marilou Diaz Abaya (Director of Silsilah Media Desk) during a renewal of commitment.

SILSILAH SOLIDARITY PROGRAM

- Through this program the Movement gives special attention to poor communities where Muslims and Christians live together and gives witness by its presence in the community and its various activities.





Day care for young children



DIALOGUE WITH CREATION PROGRAM

- This is a formation/education program targeting farmers who live in clusters in a given community.





The program seeks to educate the farmers not only on indigenous farming but also to develop in them a stronger sense of dialogue with creation and a keener sense of being stewards of Mother Earth.

PADAYON CENTER

- This is a center run by the Emmaus Dialogue Community to provide services in poor areas in Zamboanga City where Muslims and Christians live together. The PADAYON (in English, “move on”) Center is like a bridge of solidarity between government and non-government groups and it undertakes initiatives in favor of children, youth, women, the sick and other disadvantaged groups.

Community Services



SILSILAH PRAYER

- Is a spontaneous prayer (du'a) that Muslims and Christians in Silsilah do together or in separate places, in the spirit of being together in the same God, through an invisible chain that links people of different faiths. The Silsilah prayer experience is already in different countries, among groups and religious communities with the new name “Harmony Chain”.



HARMONY CHAIN

- An inter-faith initiative of meditation and prayer for dialogue and peace, linking individuals and groups from Mindanao to different parts of the World.
- **Slogan:** “Cry Peace with your Life-in-Dialogue”.

Welcome
Path to Happiness
DANCE AND MUSIC
FOR ALL!



SILSILAH FORUM

- Silsilah already has thousands of alumni, members and friends in the Philippines, especially in Mindanao. The Silsilah Forum is organized in different areas of the country to provide occasion for the alumni, members, friends of Silsilah and others, to regularly gather in fellowship. The sharing of experiences also helps to sustain their spirituality and their commitment to dialogue and peace in their respective groups, schools, parishes and institutions.

HARMONY AWARD

- In collaboration with Comunita Dialogo of Italy, the Movement annually gives out special awards to Muslim and Christian families who live together in harmony and peace in the community.

HARMONY ZONE

- Silsilah encourages the formation of HARMONY ZONES, following the model started by the Padayon Center. A HARMONY ZONE is an identified area where Muslims and Christians live together and are committed to live in harmony with each other and influence their neighbors to join the same program for the common good of the community.

HARMONY VILLAGE

- This is a special village within a 14-hectare area located in Pitogo, Sinunuc, Zamboanga City, about 8 Km from the city proper. Developed for the pursuit and the establishment of the Culture of Dialogue, Path to Peace, it has the following structures:



5-2-102



Oasis of Dialogue



Small Chapel



Silsilah Dialogue Institute



Harmony Farm



**House of
Peace**



**Bahay-
Kalikasan**















